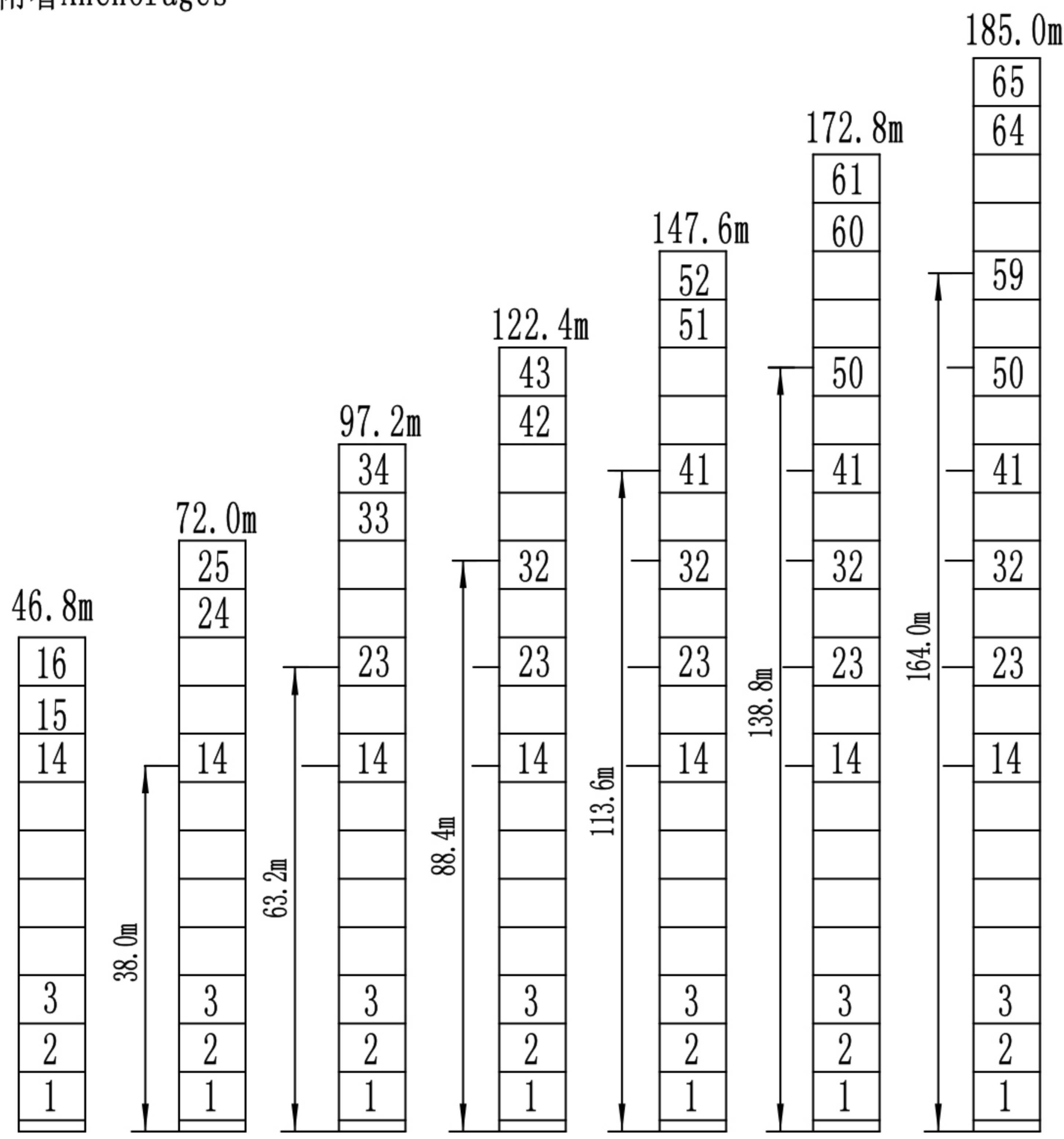
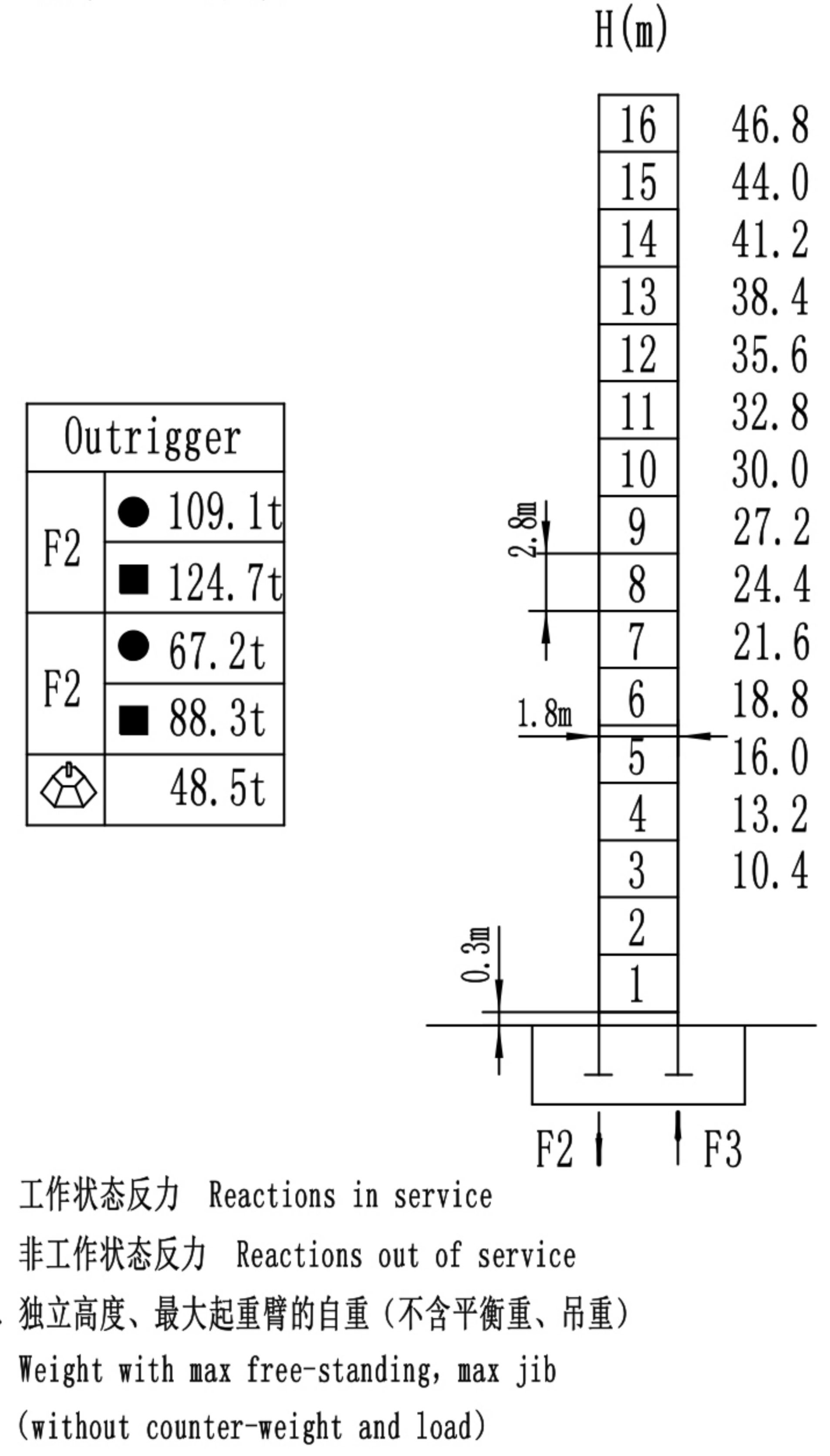


附着Anchorage



塔身Masts/反力Reactio



起重特性Load Diagrams

R (m)	最大额定起重重量时的最大工作幅度 Max Capacity (m/t)	20	22	24	26	28	30	35	40	45	50	55	60	
		60m臂 (R=61.47m)	bb	3-15.93/10.0	7.67	6.85	6.18	5.61	5.13	4.71	3.88	3.27	2.79	2.41
	b	3-29.33/5.0	5.00					4.86	4.03	3.42	2.94	2.56	2.25	2.00
55m臂 (R=56.47m)	bb	3-17.13/10.0	8.35	7.47	6.75	6.14	5.61	5.16	4.27	3.60	3.09	2.68	2.35	
	b	3-31.60/5.0	5.00					4.42	3.75	3.24	2.83	2.50		
50m臂 (R=51.47m)	bb	3-17.87/10.0	8.78	7.86	7.10	6.46	5.91	5.44	4.51	3.81	3.27	2.85		
	b	3-33.01/5.0	5.00					4.66	3.96	3.42	3.00			
45m臂 (R=46.47m)	bb	3-18.56/10.0	9.17	8.22	7.43	6.76	6.19	5.70	4.73	4.01	3.45			
	b	3-34.32/5.0	5.00					4.88	4.16	3.60				
40m臂 (R=41.47m)	bb	3-18.71/10.0	9.26	8.29	7.49	6.82	6.25	5.76	4.78	4.05				
	b	3-34.59/5.0	5.00					4.93	4.20					
35m臂 (R=36.47m)	bb	3-17.68/10.0	8.67	7.76	7.01	6.37	5.83	5.37	4.45					
	b	3-33.35/5.0	5.00					4.60						

传动机构Mechanisms

配置Configuration		b		bb		kW		⊕		
起升 Hoisting	QTJ10.80PY	m/min	0~80	0~40	0~40	0~20	37	420m(5 layers)		
		t	2.5	5	10	5				
回转 Slewing	HP55.130.195A	r/min	0~0.6				5.5×2	▲超出咨询我们 Consult us if overtop		
变幅 Trolleying	BP5565X	m/min	0~58				5.5			
380V(±10%)50Hz		53.5(kW)								