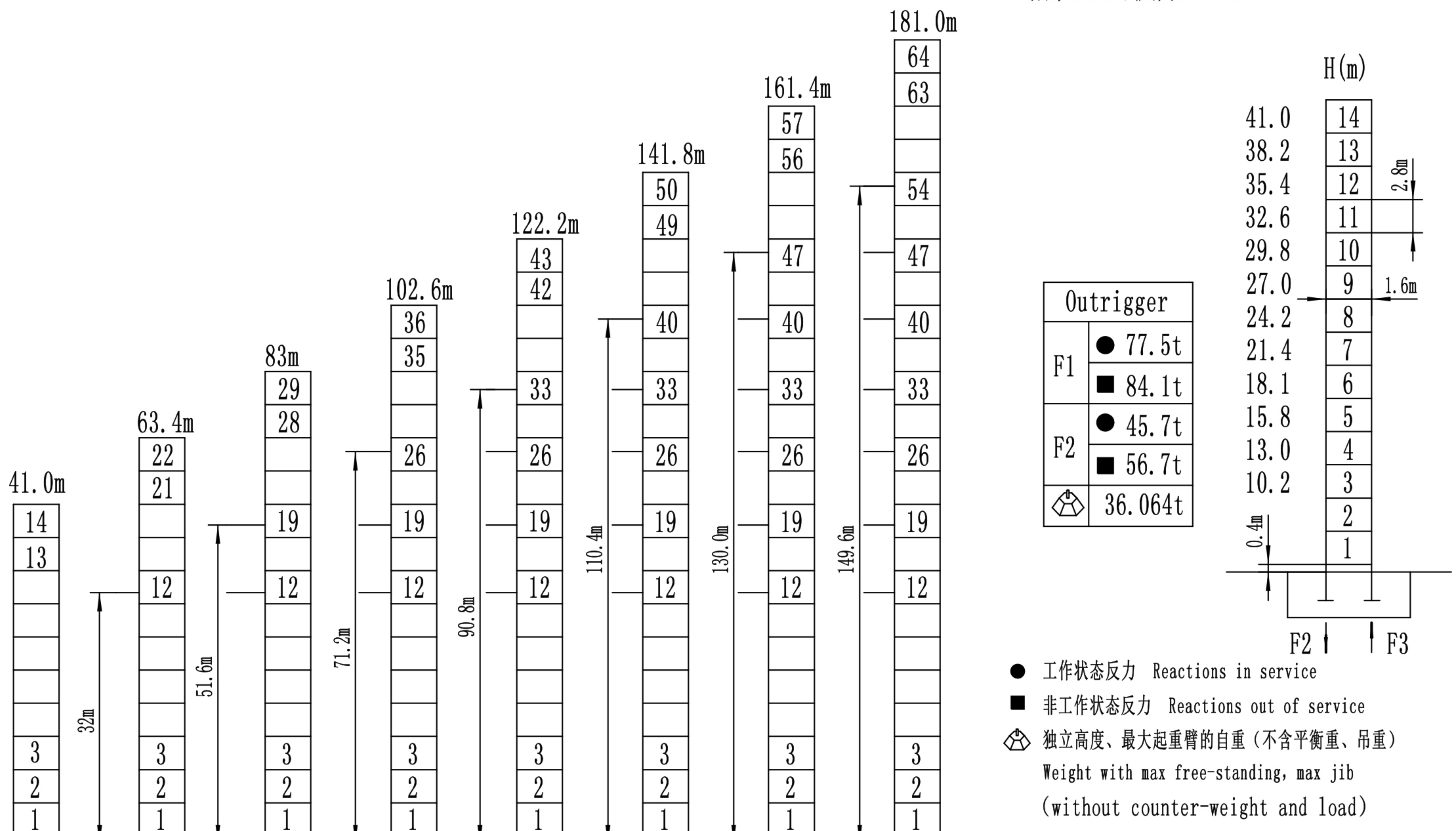


平衡重		2600/1300kg		
Icon	Icon	(kg)	PHZ2600	PHZ1300
60m	14.34m	14300	5	1
55m	14.34m	13000	5	0
50m	14.34m	11700	4	1
45m	14.34m	10400	4	0
40m	14.34m	9100	3	1

附着Anchorage

塔身Masts/反力Reaction



起重特性Load Diagrams

R(m)		最大额定起重量时的最大工作幅度 Max Capacity(m)	15	20	25	30	35	40	45	50	55	60
60m臂 (R=61.59m)	bb	3-12.89/8.0	6.78	4.92	3.80	3.06	2.52	2.13	1.82	1.57	1.36	1.20
	b	3-24.47/4.0	4.00		3.90	3.16	2.62	2.23	1.92	1.67	1.46	1.30
55m臂 (R=56.59m)	bb	3-13.72/8.0	7.26	5.28	4.09	3.30	2.73	2.31	1.98	1.71	1.50	
	b	3-26.05/4.0	4.00		3.40	2.83	2.41	2.08	1.81	1.60		
50m臂 (R=51.59m)	bb	3-14.78/8.0	7.87	5.74	4.46	3.60	2.99	2.54	2.18	1.90		
	b	3-28.07/4.0	4.00		3.70		2.64	2.28	2.00			
45m臂 (R=46.59m)	bb	3-15.38/8.0	8.00	6.00	4.66	3.78	3.14	2.67	2.30			
	b	3-29.21/4.0	4.00		3.98	3.24	2.77	2.40				
40m臂 (R=41.59m)	bb	3-15.98/8.0	8.00	6.26	4.87	3.95	3.29	2.80				
	b	3-30.35/4.0	4.00			3.39	2.90					

传动机构Mechanisms

配置Configuration		b		bb		kW	Icon	
起升 Hoisting	QTJ8.80PY	m/min	0~80	0~40	0~40	30	420m(5 layers)	
		t	2	4	4			8
回转 Slewing	HP40.120.195A	r/min	0~0.6			4×2	▲超出咨询我们 Consult us if overtop	
变幅 Trolleying	BP4060X	m/min	0~40			4		
380V(±10%)50Hz		42kW						